



**Power Panel, Lighting Panel,  
Feeder Pillars, LT DB,  
& Prewired DB**

**Simplified Power Distribution Solutions**

## Infrastructure

### State -of-the-art facility with modern equipments for quality production



### The Company

Indo Asian has a proven track record of manufacturing and marketing a wide range of high quality Electrical Switchgear products.

The group's pursuit of excellence, backed by extensive in-house R & D, and alliance with various world leaders has resulted in bringing world-class products from all the modern and state-of-the-art manufacturing units, all of which are accredited by BSCI for ISO 9001 since 1994 and is located in North India. In line with the vision of Indo Asian: "We are committed to the cause of enriching the quality of life by ensuring safe, efficient and convenient use of electricity," there is a constant endeavor to take our products and services across the country.

Indo Asian's world-class products are widely accepted and appreciated for quality, reliability and performance. With a presence in markets across the globe, Indo Asian is today synonymous with high quality in the field of electrical distribution & protection equipments. Indo Asian also brands its products for leading Multinational labels. This is a testimony of Indo Asian's products conformity to International standards, competitive prices and on time deliveries - the cutting edge. Indo Asian is engaged in manufacturing and marketing of innovative electrical solutions for application in LT installations.

### Infrastructure

The state-of-the-art factory with over 10,000 sq. meter covered area is well equipped with Customized Design Solutions, Standard Room (to control quality of incoming materials), CNC Shearing and Press Breaks (Delem, Holland controls), Welding Equipments (Spot, Mig, Tig and Stud) as well as varied press tools using 20 ton to 100 ton power presses.

The plant is also well-equipped with In-house Pretreatment and Powder Painting equipments as well as Salt Spray Test Apparatus to check the life of Painting as per required standards.

The state-of-the-art Laboratory is equipped with all necessary routine electrical tests on designed products especially when temperature rises up to 1600A.

The processes and systems are well-supported by qualified team of engineers to ensure quality and reliable products.

### Clientele

We are proudly serving with our equipments and solutions customers like NHPC, NTPC, PGCIL, EIL, State Electricity Boards, Refineries and overseas Utility companies.



## Power Panels

Power Panels are the Distribution Systems that offer distribution of bulk power to commercial, industrial applications, and remote areas with provision of double supply system. Bus coupling systems enable the shifting of load onto various incomers available. Separate energy meters for outgoing chambers make it easy to study load consumption of all outgoing feeders separately.

### Material

- CRCA Sheet thickness: 1.6 mm - 2 mm
- Powder Coating Shade: RAL 7032, RAL 7035, Jay-White

### Protection category

- IP42 to IP54

### Incomer

- ACB 800A - 3000A
- TP/FP MCB/MCCB 250A - 1000A

### Outgoing

- MCCB 63A - 200A
- No. of Ways: 8/12/14/16

### Features

PPs are designed as per customer requirements to give a positive edge to bulk supply incomer systems. Either a single incomer for all outgoing or two incomers having load divided between the two can be used. The bus coupler keeps the two loads separate & connects them on turning 'on' the coupler. This feature is used in case one of the incomers develops a fault & the load has to be shifted on the 1st or 2nd incomer. Energy meters are provided for both incomer & outgoing units for complete system analysis.

- Pad locking arrangement for safety & sealing purposes
- Red- Green indicators for Power ON-OFF indication
- Mechanical Interlocking, Doors not openable when MCCB is ON
- Separate Cable Alleys for ease of Outgoing connections

### Applications

Finds extensive use on industrial sites, commercial buildings, steel power plants, refineries, power houses etc.



## Feeder Pillars

- Conforms to IEC: 60439/61439
- Certified by ASTA/KEMA/CPRI
- Customized solutions
- Protection against over current & short circuit fault of high rupturing capacity up to 80kA
- Door interlock and pad locking facility
- Option of CRCA/Aluminum enclosure with water proofing treatment
- Purpose built, weatherproof enclosure
- Rated up to 2500A
- Transformer mounted/Free standing with up to 15 outgoing fuse ways
- Vertical fuse switch/fuse strip used for outgoing circuit
- Shroud on all the live parts to ensure complete safety during operation and maintenance
- Suitable for all type of cabling arrangement provided with cable clamps & cable glands
- Electrostatic powder coating on all steel items for glossy & fine quality finish
- Can be installed directly at site with leg support or with base channel frame



# Lighting Panels / Low Tension Distribution Boards

## Lighting Panels



This range of Distribution Boards offer complete solution for controlling power manually or automatically according to the load requirements.

### Material

- CRCA Sheet thickness: 1.6 mm - 2 mm
- Powder Coating Shade: RAL 7032, RAL 7035, Jay-White

### Protection category

- IP42 to Ip55

### Incomer

- TP/FP MCB/MCCB 63A to 250A
- TP/FP MCB/Isolator 63A to 125A

### Outgoing

- SP/DP/TP MCB 6Amp, 10Amp,
- 16A, 20A, 32A
- No. of Ways: 4/6/8/12/14/16

### Features

LPs & PPs are designed as per customer requirements to have complete controlling of power through push buttons, timers and photocell sensors. Detachable Base plate assembly enables them to be assembled/rectified easily. Termination of outgoing of MCBs onto terminal blocks make them ready to install. Compact busbar systems provide the option of increasing the rating, thereby increasing the no. of outgoing connections.

- Control of power through various arrangements such as push buttons, photo cell, timers etc.
- Pad locking arrangement for safety & sealing purposes
- Red- Green indicators for Power ON-OFF indication
- Selector switch availability for selection of controlling mode
- Detachable Gland plates on top & bottom for ease of cabling

### Applications

Finds extensive use on construction sites, industries, residential complexes, substation lighting, power plant lighting etc.



## Low Tension Distribution Boards

Single & Three Phase Pole mounted DBs fitted with Copper/Aluminium Busbars for outgoing connections, in conjunction with MCCBs as main protection device & installed energy meters for data measurement & analysis.

### Material

- CRCA Sheet thickness: 1.2 mm - 2 mm
- Powder Coating Shade: RAL 7032, RAL 7035, Jay-White

### Protection category

- IP42 to IP55

### Incomer

- MCCB 63A to 200A

### Outgoing

- Termination on Busbars

### Features

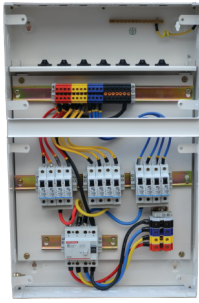
- MCCBs to ensure circuit protection from overloads & short circuits
- Available with Direct/CT operated energy meters
- Pad locking arrangement to lock/seal DBs
- Availability of models that can be directly mounted on transformer bushings

### Applications

Used for distribution of power in urban/rural areas with installed energy meters to keep a check on power theft and data analysis for power management.



# Pre-Wired DBs / Meter Boards



## Prewired DBs

Prewired DBs are the fully wired & tested DBs enabling quick and efficient installation in residential complexes, offices, shopping malls etc.

### Material

- CRCA Sheet thickness: 1.2 mm - 2 mm
- Powder Coating Shade: RAL 7032, RAL 7035, Jay-White
- Protection category IP20 to IP42

### Incomer

- DP/FP MCB/ISOLATOR 32A to 125A

### Outgoing

- SP MCB 6A, 10A, 16A, 20A, 32A
- No. of Ways: 4/6/8/12/14/16
- TYPE: SPN/TPN

### Features

Prewired DBs are fully wired from start to end at terminal blocks for outgoing connections. Each outgoing circuit is separately protected from over currents & short circuits by MCBs, indicating lamp for live circuit indication.

### Applications

Prewired DBs find extensive use in shopping malls, housing complexes, official complexes etc.

## Meter Boards

Meter Boards are used to bring all the energy meters at a common point for the ease of distribution, data analysis and safety reasons.

### Material

- CRCA Sheet thickness: 1.6 mm-2 mm
- Powder Coating Shade: RAL 7032, RAL 7035, Jay-White.

### Protection category

- IP42 to IP55

### Incomer

- TP/FP MCB 63A to 125A

### Outgoing

- Energy meters with MCB Rating 10A - 40A
- No. of Ways: 4/6/8

### Features

- Meter boards consist of a compact busbar system controlled by three phase incomer MCB
- Outgoing connections are taken through MCBs with separate energy meter for each connection
- Separate pad locking of each metering compartment
- Termination of outgoing connections onto terminal strips makes them ready to install
- Acrylic Meter windows for data reading in pad locked position

### Applications

Meter Boards are used in housing complexes, shopping malls etc.

# Fuse Cutouts / Plug & Socket DBs

## Fuse Cutouts

Indo Asian brings the standard for safety and convenience in a power distribution system. Introducing House Service Cutouts, Pole Mounted Aerial Fuse Cutouts and Street Lighting Cutouts.

These cutouts provide backup protection to the Distribution System and are used in domestic and industrial electric circuit protection with Distribution Boards. Lighting columns provide reliable street lighting and hence improve road safety.

### House Service Cutouts

- Rated: Up to 100A
- Conforms to: BS 7657 & 1361
- Available in SP, SPN and TPN configuration

### Pole Mounted Aerial Fuse Cutout

- Rated from 20A to 400A
- Conforms to: BS 7656-1993
- IP 43 protection

### Street Lighting Cutouts

- Thermoplastic Type
- Conforms to: BS EN 61439 : 2011/IEC 61439 : 2011
- Suitable for lighting column to BS 5649 with 76 mm diameter.
- Sheet Steel Type
- Tested and approved as per IP44
- Suitable for lighting poles 4 m to 20 m
- Available with BW 25 or BW 32



## Plug & Socket DBs

Purpose built plug in distribution assemblies supplied to refineries, manufacturing industries, petrol pumps, lighting loads etc. The DBs are supplied to sites fully wired & tested, therefore enabling quick and efficient installation.

### Material

- CRCA Sheet thickness: 1.2 mm - 2 mm
- Powder Coating Shade: Jay-White

### Protection category

- IP42 to IP55

### Incomer

- Four Pole RCCB + Four Pole MCB/ISOLATOR
- Rating 63A-125A
- MCCB 63A-200A

### Outgoing

- Sockets: SP & TP (Metal Clad/Insulated)
- Rating 16A, 20A, 32A, 63A

### Features

- Plug & Socket DBs come duly fitted with three/five pin sockets, individually protected from over currents and short circuits by the use of MCBs at outgoing circuits
- Individually Protected sockets for overall protection of the system
- Both SP & TP Sockets for Single & Three Phase supply respectively
- Availability of base frames for outdoor applications for foundation mounting locations

### Applications

These have applications in refineries for maintenance/setting up of temporary connections, power plants, large commercial sites etc.





## Timelite DBs

Electricity is exponentially taking over our life style. Its consumption in our life has gone up many folds. Its usage has gone up neck pace in various applications like domestic and industrial. This has necessitated us to utilize electrical energy in a safe and efficient way, so that it continues to play a pivotal role in our life. This requires a design/solution which can protect from overload/short circuit in addition to saving energy in every possible way. Timelite DBs are prefabricated and engineered solution protection to save energy for lighting applications.

### Salient Features

- Aesthetically appealing with locking facility
- IP54 degree of protection
- Switch-ON & Switch-OFF street lights on time scheduling basis by incorporating an analog/digital time switch and contactor
- Rating of contactors depends on the luminaires and wattage of lighting loads
- Range includes from 16A to 110A with analog/digital time switch. Model incorporating energy meter is also available on request
- Selector Switch for selecting time mode, continuous 'ON' mode or permanent 'OFF' mode



Rating (A)	MCB* (Ratings)	MCCB* (Ratings)	Time Switch		Contactor*** (AC-3 Rating)
			Analog	Digital	
16A	16A	-	TA926453	TDA43110	16A
32A	32A	-	TA926453	TDA43110	32A
40A	40A	-	TA926453	TDA43110	40A
50A	50A	-	TA926453	TDA43110	50A
65A	-	80A	TA926453	TDA43110	65A
80A	-	80A	TA926453	TDA43110	80A
95A	-	100A	TA926453	TDA43110	95A
110A	-	125A	TA926453	TDA43110	110A

\*MCB will be of 'C' curve 10kA breaking capacity.

\*\*Standard MCCB will have 16kA breaking capacity.

\*\*\*Contactor coil voltage is 230V AC as standard.

## Busbar Chambers

Busbar Chambers offer ultimate solution in taking number of outgoing connections from single incoming source.

### Material

- CRCA, FRPP Sheet thickness: 1.2 mm - 2 mm
- Powder Coating Shade: RAL 7032, RAL 7035, Jay-White

### Protection category

- IP42 to IP55

### Incomer

- Termination On Busbars
- Rating 100A -630A

### Outgoing

- Termination on Busbars
- TYPE: SPN/TPN

### Features

- The Busbar Chambers are available in SP/TP Arrangement System equipped with Copper/Aluminium busbars duly fitted with cable lugs of suitable sizes as per customer requirements, pre assembled lugs for easy termination of cables
- Adequate space for cable termination directly on busbars
- Pad locking arrangement to lock/seal DBs, availability of Wall/Pole mounting with clamps of suitable size arrangement

### Applications

Used extensively in industries, housing complexes, street lighting junctions, shopping malls etc.



**CORPORATE OFFICE:** B-24, Phase - II, Noida - 201305, U.P., India Ph.: +91-120-3853000 Fax: +91-120-3853002 E-mail: sales@indoasian.com, international@indoasian.com Website: www.indoasian.com

**CONSUMER CARE CELL:** B-24, Phase - II, Noida - 201305, U.P., India Ph.: +91-120-3042222 E-mail: feedback@indoasian.com

#### NORTH

##### CHANDIGARH

S.C.O.-11, 2nd Floor,  
Madhya Marg, Sector-26,  
Chandigarh-160002  
Ph.: 0172-3934651-64  
Telefax: 0172-3934656  
E-Mail: in-chandigarh-office@indoasian.com

##### DELHI

721-722, 7th Floor,  
DLF Tower B,  
Jasola District Centre,  
New Delhi-110044  
Ph.: 011-30821773-74  
E-Mail: in-delhi-office@indoasian.com

##### JAIPUR

433, Ganpati Plaza,  
M. I. Road,  
Jaipur-302001  
Ph.: 0141-4113528  
E-Mail: in-jaipur-office@indoasian.com

##### LUCKNOW

301, Chintel House,  
Station Road,  
Lucknow-226001  
Ph.: 0522-4013210  
TeleFax: 0522-4013210  
E-Mail: in-lucknow-office@indoasian.com

#### SOUTH

##### BANGALORE

402, 4th Floor, Blue Cross Chambers,  
Infantry Road Cross,  
Bangalore-560001  
Ph.: 080-25585043, 25591677  
Fax: 080-25591546  
E-Mail: in-bangalore-office@indoasian.com

##### COCHIN

35/1403 B, 1st Floor,  
M. K. M. Building, Palarivattom,  
Cochin-682025  
Ph.: 0484-4055581-88  
Fax: 0484-4055589  
E-Mail: in-cochin-office@indoasian.com

##### COIMBATORE

D. No. 83,  
Dr. Nanjappa Road,  
Coimbatore-641018  
Ph.: 0422-2302715  
Fax: 0422-2302715  
E-Mail: in-coimbatore-office@indoasian.com

##### CHENNAI

Ambal Building,  
1<sup>st</sup> Floor, 727,  
Anna Salai,  
Chennai-600006  
Ph.: 044-28297527, 28297143  
E-Mail: in-chennai-office@indoasian.com

##### HYDERABAD

312, 3rd Floor,  
Amrutha Estates,  
Himayath Nagar,  
Hyderabad-500029,  
Ph.: 040-66742425-29  
E-Mail: in-secunderabad-office@indoasian.com

#### WEST

##### AHMEDABAD

203-204, Shreedhar Avenue,  
11, Sardar Patel Colony,  
Near Sardar Patel Statue,  
Naranpura, Ahmedabad-380014  
Ph.: 079-30002092-94  
Fax: 079-27680439  
E-Mail: in-ahmedabad-office@indoasian.com

##### GOA

No. 606, 6th Floor,  
Unitech City Center,  
M.G. Road, Panjim,  
Goa-403501  
Ph.: 0832-2420934, 9422445501  
E-Mail: in-go-a-office@indoasian.com

##### INDORE

C-18, Block B,  
New Siyaganj Market,  
Indore-452007  
Ph.: 0731-4064064, 8889211108  
Fax: 0731-4064064  
E-Mail: in-indore-office@indoasian.com

##### MUMBAI

G-6, Nahar & Seth Industrial Estate,  
Chakala, Andheri East,  
Mumbai-400099  
Ph.: 022-28390072, 28301987  
Fax: 022-66922831  
E-Mail: in-mumbai-office@indoasian.com

##### PUNE

Rajadwar Building, 4th Floor,  
1307, Shivaji Nagar,  
Off. J. M. Road,  
Pune-411005  
Ph.: 020-30116638-39, 60501144  
Fax: 020-25520659  
E-Mail: in-pune-office@indoasian.com

#### SURAT

306, Golden Point,  
Ring Road,  
Surat-395003  
Ph.: 0261-3990890, 9825224054  
E-Mail: in-surat-office@indoasian.com

#### EAST

##### JAMSHEDPUR

9, Rustomji Mansion  
Main Road, Near Signal Light,  
Bistupur, Jamshedpur-831001  
Ph.: 09830893435  
E-Mail: in-jamshedpur-office@indoasian.com

##### KOLKATA

61/B, Palm Avenue,  
Kolkata-700019  
Ph.: 033-32934121, 32609475  
E-Mail: in-kolkata-office@indoasian.com